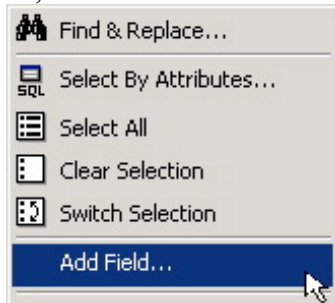
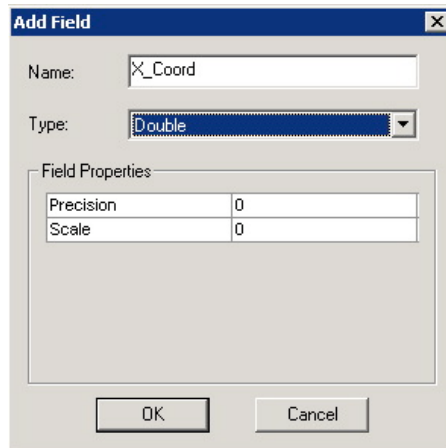


Adding X and Y Coordinates to a Point Theme's Attribute Table in ArcMap

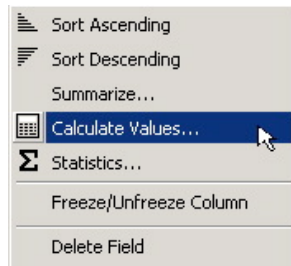
1. Add the layer to an ArcMap document.
2. Open the attribute table by right-clicking the theme in the Table of Contents window.
3. If there is no X-coordinate field, select Add Field from the Options menu.



Add a new field of type double called XCoord or X_Coord. Repeat to add a Y_Coord field.



4. Right-click the field heading for the X field and select Calculate Values.



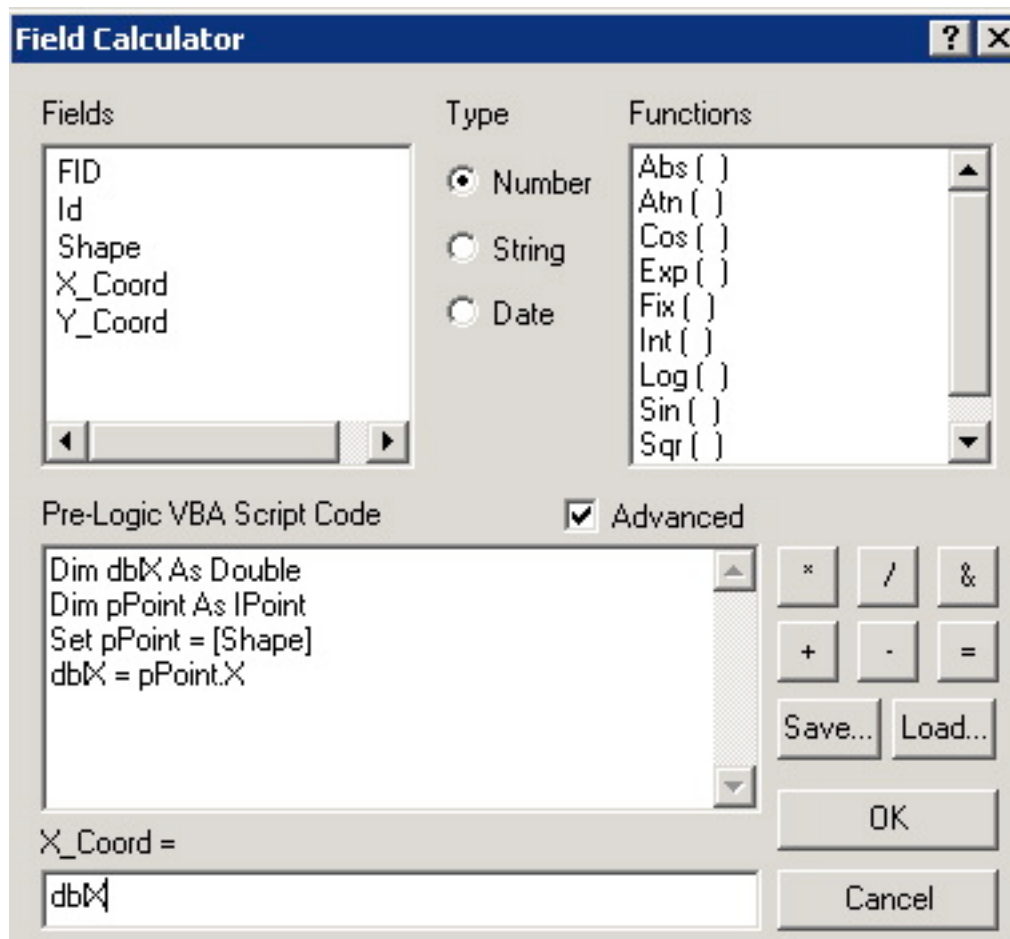
5. Check Advanced.

6. Type the following VBA code in the Pre-logic VBA Script Code text box:

```
Dim dblX As Double
Dim pPoint As IPoint
Set pPoint = [Shape]
dblX = pPoint.X
```

7. Type the variable name dblX in the text box directly under the X field name (X_Coord=)

8. Click OK



9. Repeat steps 4-7 for the Y-coordinate values, substituting Y for X in the variable names (dblY and pPointY).

Saved field calculator expressions are available from
<http://forest.mtu.edu/staff/mdhyslop/gis/>