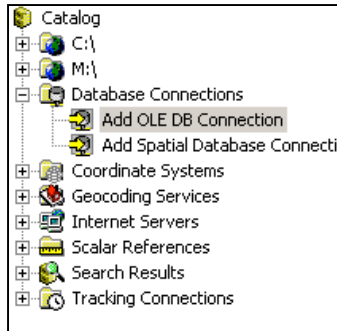


### Converting Excel Files to XY Data with ArcGIS 8.3

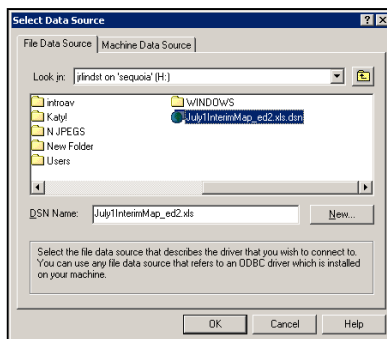
1. Start ArcCatalog and navigate to the "Database Connections" folder in the Catalog tree.



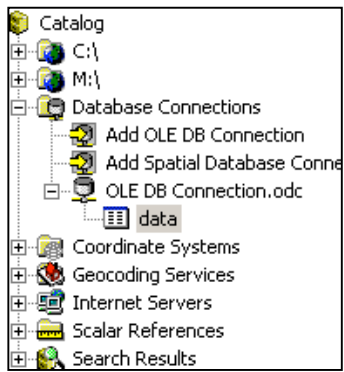
2. In the Catalog tree expand the "Database Connections" folder and double-click "Add OLE DB Connection".

3. This brings up the "Data Link Properties" window, under the "Providers" tab select "Microsoft OLE DB Provider for ODBC Drivers" and click "Next".

4. Under step 1 of the "Connections" tab, select "Use connection string" and click "Build".
5. This brings up the "Select Data Source" window. Next to the DSN Name dialog click "New", and select "Microsoft Excel Driver (\*.xls)" from the list. Then click "Next".
6. In the "Create New Data Source" window click "Browse" and navigate to your file. You may have to change "Save as type" to "All Files". Click "Save", then "Next" and "Finish".
7. From the "ODBC Microsoft Excel Setup" window click "Select Notebook". Again select your file and click "Ok". Click "Ok". Highlight the new \*.dsn file you've created and click "Ok". Click "Ok". Click "Ok".



8. Navigate to the "Database Connections" in the ArcCatalog catalog tree. Make sure it is expanded and double-click "OLE DB Connection.odc" to connect to the data. Select "Data" and hit the preview tab to make sure your table has imported correctly.



9. Launch ArcMap. Click the "Add Data" button. Select "Database Connections" from the "Look in:" drop down menu. Double-click "OLE DB Connection.odc". Select "Data" and click "Add".
10. From the Tools Menu, select "Add XY data...". Verify your X and Y fields are correct. Click "Edit" to set up a coordinate system. Click "Ok". Click "OK".

11. Your Data should now appear in the data frame.